

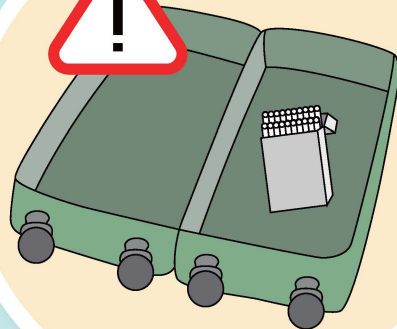
The import of alternative smoking products (ASPs) (electronic cigarettes, heated tobacco products, and herbal cigarettes), including bringing in by incoming travellers is prohibited.

Starting 30 April 2026, possession (smoking or use) of ASPs in public places is prohibited. Offenders are liable to a fine of \$3,000.

Visitors bringing in tobacco in excess of the exempted quantities (19 cigarettes, or one cigar\*, or 25 grams of other manufactured tobacco) should enter the **Red Channel** and make a declaration to Customs officers.

\*In cases of more than one cigar, the total weight must not exceed 25 grams.

Buying or selling illicit cigarettes is also illegal and the maximum penalty upon conviction is a fine of \$2 million and imprisonment for seven years.



The law also prohibits the provision of any smoking products (conventional smoking products, electronic cigarettes, heated tobacco products, herbal cigarettes) to persons under the age of 18. The maximum penalty is a fine of \$50,000 and six months' imprisonment.

Customs and Excise Department

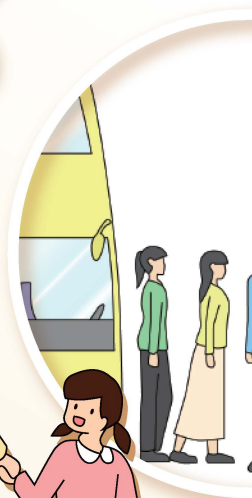
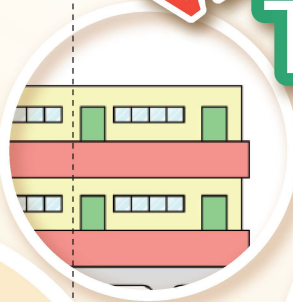


Tobacco and Alcohol Control Office,  
Department of Health



## Visitors' Guide

# Tobacco Control Measures in Hong Kong



衛生署控煙酒辦公室  
Tobacco and Alcohol Control Office  
Department of Health



Effective  
1 January  
2026

Statutory  
no smoking  
areas cover

Public  
transport  
carriers

Indoor areas:  
Public place,  
restaurant premises,  
shopping malls,  
bars, etc.

Indoor and  
outdoor areas:  
cinemas, escalators,  
child care centres,  
hospitals, schools,  
etc.

3 metres outside  
the entrances/ exits for  
child care centres, hospitals,  
schools, residential care homes,  
and specified clinics  
or health centres, etc.

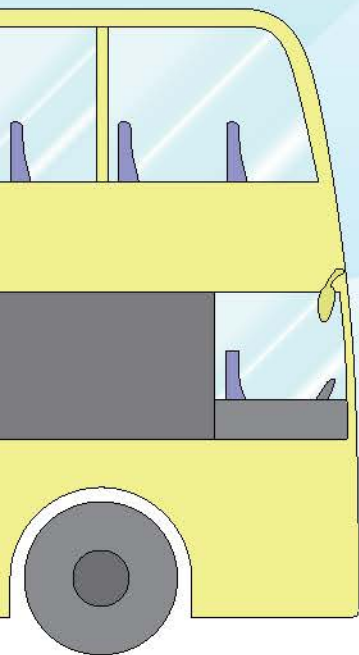


Smoking is  
prohibited  
in the following  
situations

While queuing  
to board  
a public transport  
carrier

Staying at a bus shelter  
or other delineated  
areas of designated  
boarding locations

While queuing to  
enter museums,  
stadiums, and  
theme parks,  
etc.



Offenders are  
liable to a fixed  
penalty of \$3,000